

Stand outside the shop and look to your right. Can you see the big tree with the wall around it? This is a very old yew tree. It might even be 200 years old, and they can live to be 1000 years old.

Walk up to the Adventure Playground.

In the bank at the top end are old coppice trees – cut down near the ground so they shoot out again. You can also see these on the bank at the top end of the Five Acre field. There is also a large Turkey Oak pollard – a tree which is cut down higher up and allowed to grow again to provide lots of wood.

Explore the woods around the park.

There are several different types of ferns in the forest as well as bluebells and foxgloves at different times of year.



foxgloves at



We hope you enjoy your nature trail.

Let us know if you see anything unusual.

Remember

Never pick wild flowers, damage trees or shrubs or eat any fungus!

Please let us know what you think about this trail.



Forest Glade Holiday Park
Cullompton
Devon
EX15 2DT.
www.forest-glade.co.uk



Please recycle me after use!

Nature Trail

Start in the Five Acre field. Notice the very old hedge banks, which were once topped with hedges as enclosures for livestock. Some hedgerows in the Blackdown Hills are very old, up to 1000 years old. Can you count how many different types of woody plants there are? The more there are, the older the hedge is.

Find the sweet chestnut trees. They have bumpy, twisted bark. The leaves are like this. You can eat these chestnuts roasted,



if the squirrels don't get them first! There are also horse chestnut trees in the Five Acre. The leaves are this shape. In the

autumn there will be conkers.

Follow the track down the side of the field to the tap and turn right over the bank into the Christmas Trees. Turn right and then turn left and go down through the Christmas Tree Field and into the woodland beyond.



Why do you think there are only a few plants growing under the trees here? Look out for the moss on the edges of the forest and tracks, where there is more light.

How many different kinds of fir cone can you find on your walk? Douglas fir cones have a 3-pronged bract.



Why not have a look at the activity sheets available in the Tourist Information Room?



Norway spruce are larger and longer.

Larch trees also have cones but they are not evergreen trees, they lose all their leaves in winter.



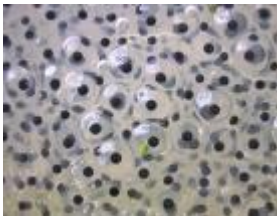
Can you find your way through the willow tunnel? This is fun to play in but there are creatures that like living in willow. Can you see any?

Go over to the pond near the tennis court. What can you see?



spring and dragonflies.

You might see pond skaters, frogspawn in the



The yellow iris grows here.



spotted orchid growing with the yellow-flowered bird's foot trefoil,



Walk along behind the tennis court.

The flowers of the buddleia bushes attract butterflies in the summer. How many different kinds of butterfly can you see? Look them up on the chart in the Wildlife Information Room.



Explore the forest behind the tennis court. Autumn is the time to hunt for mushrooms and toadstools.

A common one is the sulphur-tuft which is bright yellow and grows in clumps on tree stumps.



In the rough grassland near the pond you may be able to spot the common



silverweed and self heal.



The trunks of sweet chestnut trees are places to look for the spectacular bracket-fungus called chicken-of-the-woods.



Did you notice the nest boxes that have been put up all around the park? The big ones are for owls. April and

May are the best times to watch for birds using

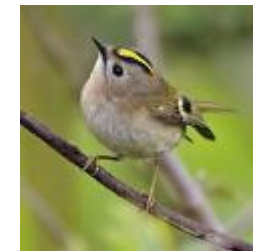


them. Blue tits and great tits like these



boxes. Coal tits also live in these woods but they prefer the conifer

plantations, as do the tiny goldcrests. Nuthatches also nest in boxes. They plaster mud



around the entry hole of the box and this helps find which nest box they are using. Listen out for all the different bird calls you can hear.